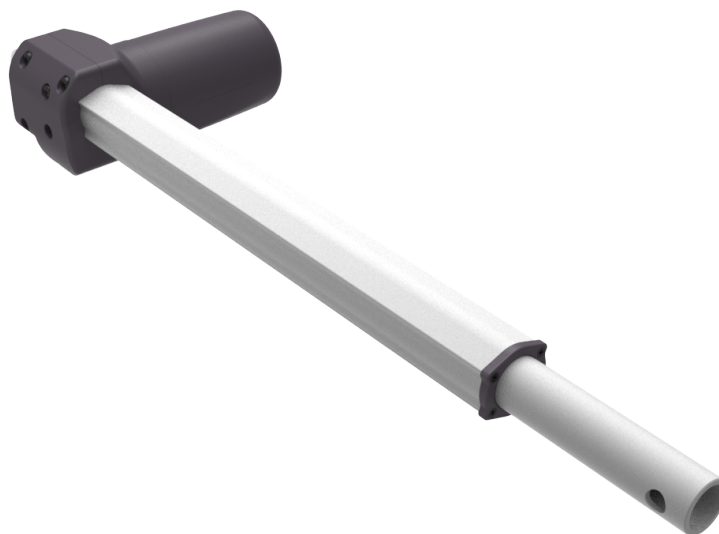


# ACTUATOR MI-16 whit stem

Code MOAC16000



BETWEEN HUMAN AND TECHNOLOGY



**2YEARS**

Warranty

## Benefit

This actuator has been designed to be used in relax and headrest mechanisms. Inside there are a bearings and a plastic support. The maximum pull load is 3000N and the maximum speed is 50mm/sec (750N). It's compact and it is possible to obtain a minimum distance equal to

the stroke +130mm. It is also equipped with adjustable limit microswitches.

## Technical features

Max stroke: 500mm

Max load: **3000N**

Rear attachment: 0° - 45° - 90° -135°

Supply cable length: 500mm - 1000mm

## Configuration (max load - speed no load)

3000N - 8mm/sec	1500N - 16mm/sec	1300N - 25mm/sec	1000N - 35mm/sec	750N - 50mm/sec

**Motionitalia** Design and quality Made in Italy

Headquarters: via Navicella 26, 47122 Forlì (FC) Tel.+39 0543 774768 Fax.+39 0543 798409 [www.motionitalia.com](http://www.motionitalia.com) [info@motionitalia.com](mailto:info@motionitalia.com)

The producer reserves the right to modify, at any moment and without notice, the technical specification of its products