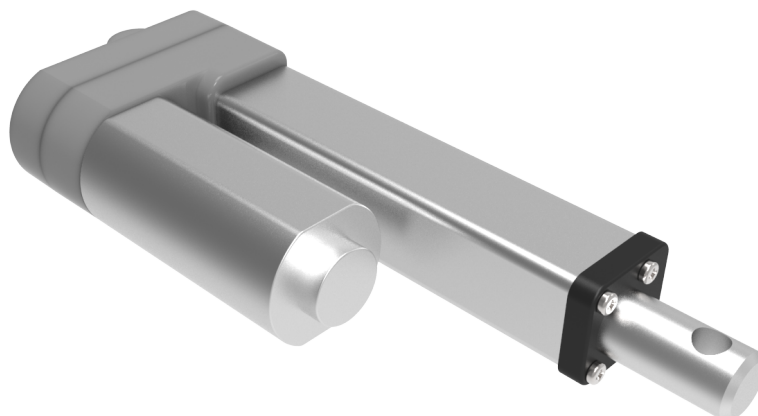


# ACTUATOR MI-13 telescopic stem

Code MOAC13000



BETWEEN HUMAN AND TECHNOLOGY



**2YEARS**

Warranty

## Benefit

Thanks to its reduced dimensions, the MI-13 telescopic stem actuator is suitable for applications where the available space is particularly small, such as compact

headrests and backrests. The adjustable microswitches may compensate any small differences in the frames or mechanisms.

## Technical features




Max stroke: 250 mm

Max load: 3000 N

Rear attachment: 0° - 90°

Supply cable length: 500 mm - 1000 mm

## Configuration (max load - speed no load)

		
3000 N - 5 mm/sec	1500 N - 10 mm/sec	800 N - 15 mm/sec

**Motionitalia** Design and quality Made in Italy

Headquarters: via Navicella 26, 47122 Forlì (FC) Tel. +39 0543 774768 Fax. +39 0543 798409 [www.motionitalia.com](http://www.motionitalia.com) [info@motionitalia.com](mailto:info@motionitalia.com)

The producer reserves the right to modify, at any moment and without notice, the technical specification of its products